

61	17.25
60	17.25
59	17.25
58	17.25
57	17.25
56	17.25
55	17.25
54	17.25
53	17.25
52	17.25
LX6	15.5
51	15.5
50	15.5
49	15.5
48	15.5
47	15.5
46	15.5
45	15.5
44	15.5
LX5	13.5
43	13.5
42	13.5
41	13.5
40	13.5
39	13.5
38	13.5
37	13.5
36	13.5
35	13.5
34	13.5
LX4	10.75
33	10.75
32	10.75
31	10.75
30	10.75
29	10.75
28	10.75
27	10.75
26	10.75
25	10.75
24	10.75
LX3	7.5
23	7.5
22	7.5
21	7.5
20	7.5
19	7.5
18	7.5
17	7.5
LX2	4.5
16	4.5
15	4.5
14	4.5
13	4.5
12	4.5
11	4.5
10	4.5
LX1	3.5
9	3.5
8	3.5
7	3.5
6	3.5
5	3.5
4	3.5
3	3.5
2	3.5
1	3.5
0	3.5

Symbols

Martin Rush 2	Alto Fresnell 2.5Kw
Martin Mac 2000 Wash XB	Alto Fresnell 2.5Kw + BarnDoor
Robe Robin Esprite	Alto Fresnell 2.5Kw + BarnDoor + Scroller
Ayrton Bora A	Alto P.C 2.5Kw
Martin Mac Viper with shutters	Cadenza Fresnell 2.5Kw
Ayrton Diablo	Alto P.C 2.5Kw + BarnDoor
Galypaky Axcore 600 Profile	Cadenza Fresnell 2.5Kw + BarnDoor
Color Force II 72™	Fresnell 1Kw
	P.C 1Kw
	Profile Zoom 1.2Kw Cantata 18/32
	Profile Zoom 1.2Kw Cantata 26/44
	H.M.I Fresnell 4Kw + BarnDoor
	H.M.I Fresnell 2.5Kw + BarnDoor + Mecanical Dimmer
	Iris 1Kw
	Iris 4X1.2Kw
	Orion Grand Row 4X1.25Kw
	P.A.R 64 1Kw
	P.A.R 64 1Kw + BarnDoor
	P.A.R 64 1Kw + Scroller
	P.A.R 64 1Kw Short nose
	Sil 15 1kw
	Leko 6X9 1Kw
	Leko 6X12 1Kw
	Leko 6X16 1Kw
	Leko 6X22 1Kw
	M.R 16

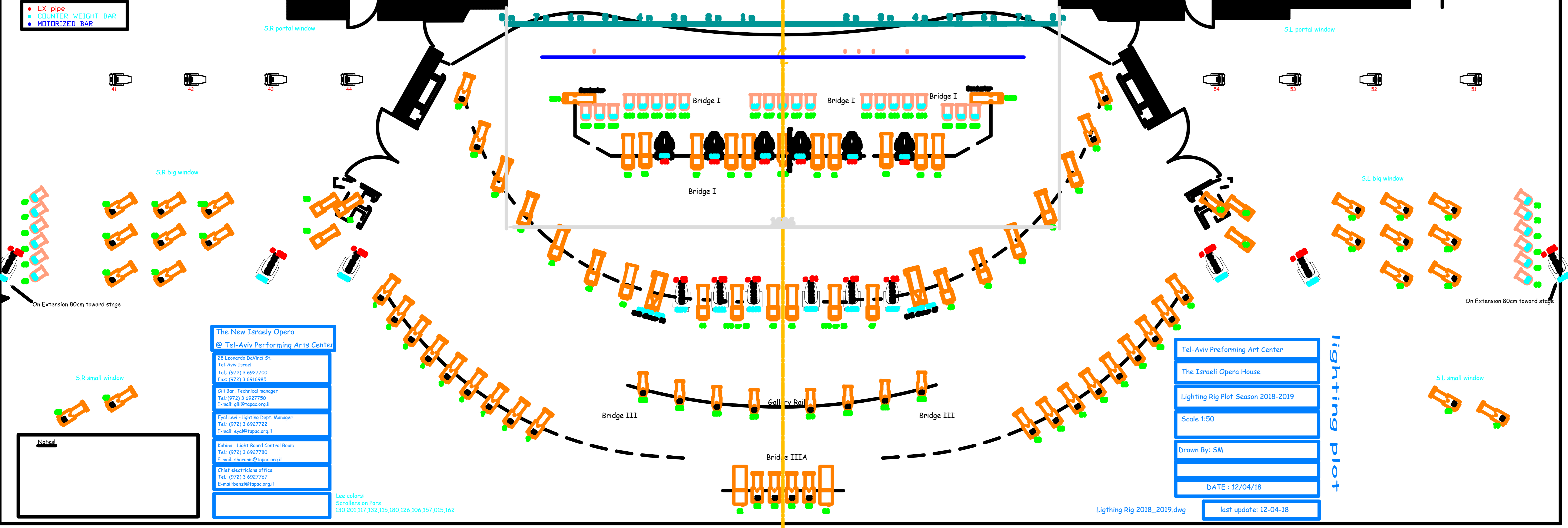
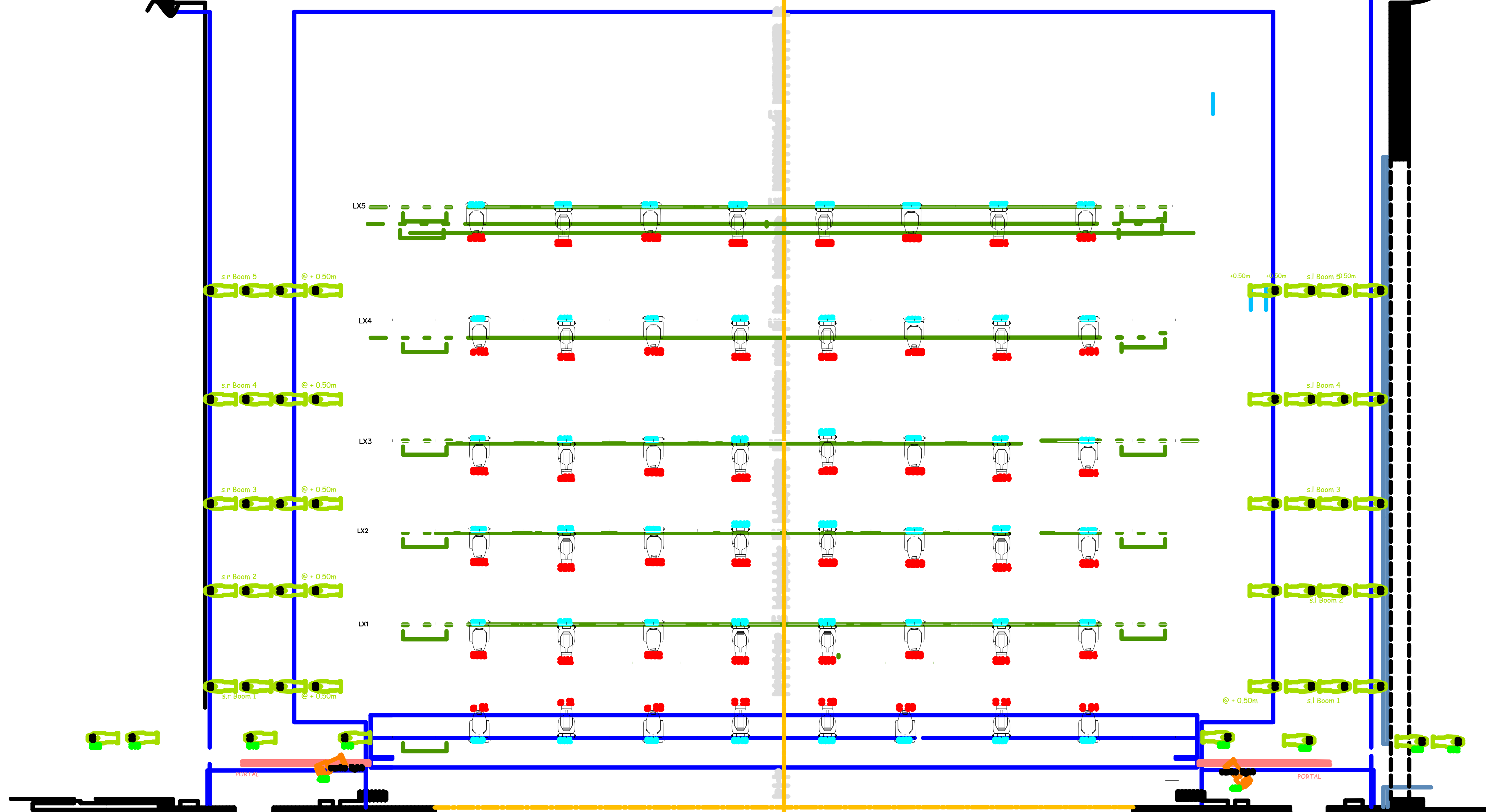
Conventionalis in use

Profile Zoom 1.2Kw Cantata 11/26
ETC Source4
Par 64 1Kw
HPZ 15/38 1.2 kw
HP.Z 15/35 2 Kw
HP.Z 15/40 2 Kw
Nthammer
HP5 xxx 2 Kw

Notes

Legacy Symbols

5Kw Fresnell	Alto Fresnell 2.5Kw
5Kw Fresnell + BarnDoor	Alto Fresnell 2.5Kw + BarnDoor
5Kw Fresnell + BarnDoor + Scroller	Alto Fresnell 2.5Kw + BarnDoor + Scroller
Alto P.C 2.5Kw	Cadenza Fresnell 2.5Kw
Alto P.C 2.5Kw + BarnDoor	Cadenza Fresnell 2.5Kw + BarnDoor
Alto P.C 2.5Kw + BarnDoor + Scroller	Fresnell 1Kw
	P.C 1Kw
	Profile Zoom 1.2Kw Cantata 18/32
	Profile Zoom 1.2Kw Cantata 26/44
	H.M.I Fresnell 4Kw + BarnDoor
	H.M.I Fresnell 2.5Kw + BarnDoor + Mecanical Dimmer
	Iris 1Kw
	Iris 4X1.2Kw
	Orion Grand Row 4X1.25Kw
	P.A.R 64 1Kw
	P.A.R 64 1Kw + BarnDoor
	P.A.R 64 1Kw + Scroller
	P.A.R 64 1Kw Short nose
	Sil 15 1kw
	Leko 6X9 1Kw
	Leko 6X12 1Kw
	Leko 6X16 1Kw
	Leko 6X22 1Kw
	M.R 16



The New Israeli Opera
 @ Tel-Aviv Performing Arts Center
 18 Leonardo DaVinci St.
 Tel-Aviv Israel
 Tel: (972) 3 6927700
 Fax: (972) 3 6916985
 Gili Bar, Technical manager
 Tel: (972) 3 6927790
 E-mail: gili@trappac.org.il
 Eyal Lev - lighting Dept. Manager
 Tel: (972) 3 6927722
 E-mail: eyal@trappac.org.il
 Kibara - Light Board Control Room
 Tel: (972) 3 6927780
 E-mail: kibara@trappac.org.il
 Chief electronics office
 Tel: (972) 3 6927767
 E-mail: benor@trappac.org.il

Use colors:
 Scrollers on Pars
 130,201,117,132,115,180,126,106,157,015,162

Tel-Aviv Performing Art Center
 The Israeli Opera House
 Lighting Rig Plot Season 2018-2019
 Scale 1:50
 Drawn By: SM
 DATE: 12/04/18
 last update: 12-04-18

Lighting Rig 2018_2019.dwg